

**SECURING  
OUR FUTURE**  
ECONOMIC  
MOBILITY SUMMIT  
*Building pathways for upward mobility*



# WELCOME

# Economic Mobility Summit

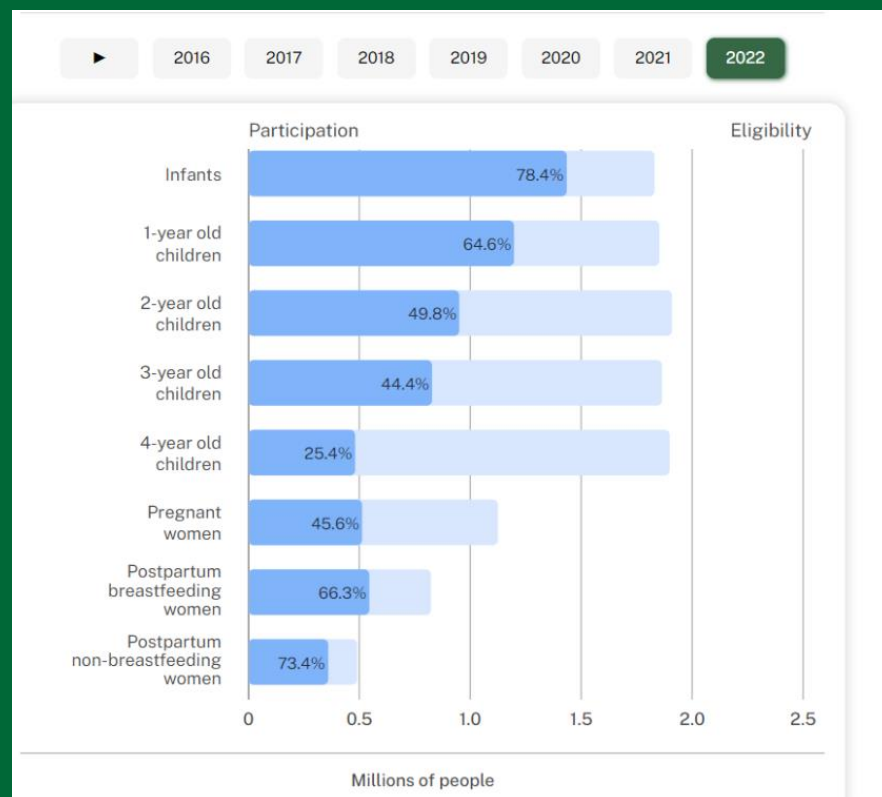
Addressing Food Insecurity to Nourish Our Future

*Bread for the World 2025 Campaign*



# WOMEN INFANTS AND CHILDREN (WIC)

- ❖ In 2023, an average of 6.6 million participants were served by WIC every month
- ❖ WIC is a critical community support; redemption of WIC foods infused \$4.4 billion into local economies in 2023
- ❖ Despite an overall modest increase in participation since the beginning of the pandemic, WIC is still reaching too few eligible people



# PROPOSED POLICY PLATFORM

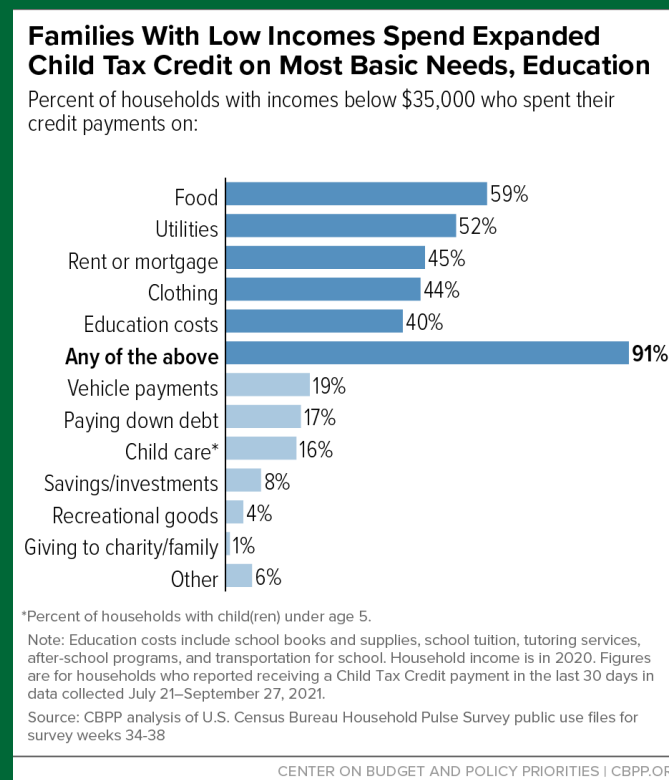
## Fully fund and modernize WIC for all eligible participants

- ❖ Urge Congress to fully fund WIC now and in the future, so that all who are eligible and apply have access
- ❖ Pass the Modern WIC Act, which would strengthen the program and make it easier for families to sign up



# THE CHILD TAX CREDIT

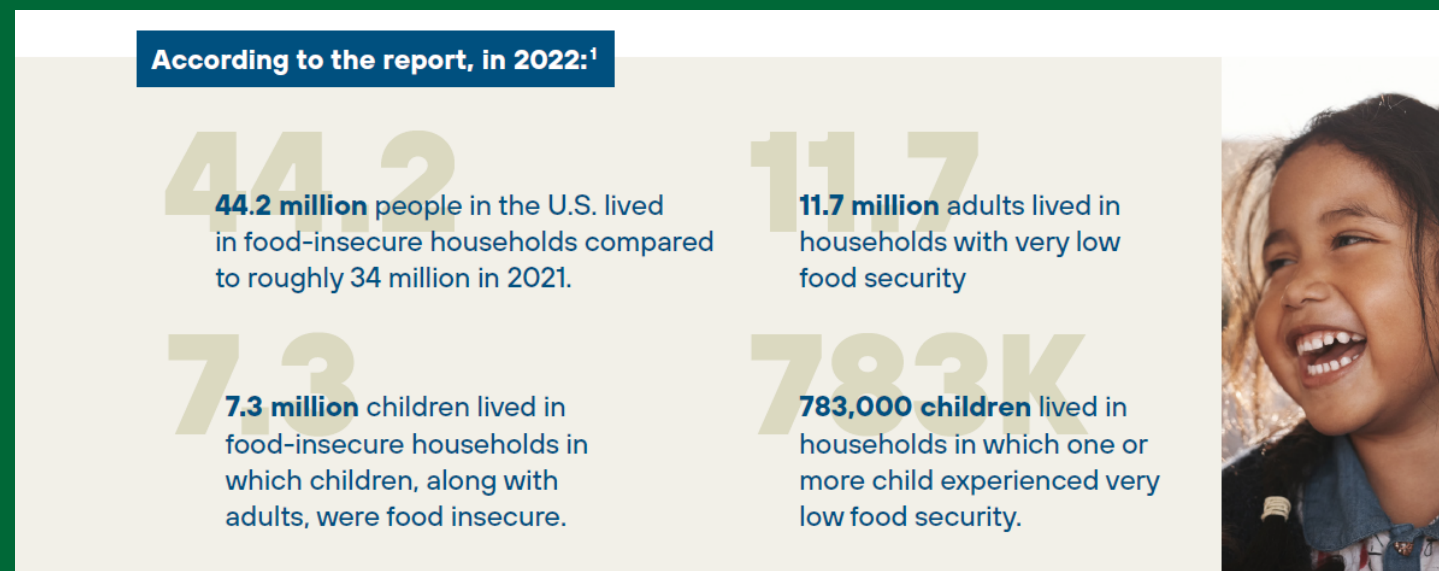
- ❖ An estimated 16 million American children benefited from improvements to the CTC, including roughly half of all Black and Latino children, whose families (along with other families of color) are disproportionately employed in low-wage jobs because of historic and ongoing discriminatory policies and practices
- ❖ Of Florida's 8,800,279 households in 2022...
  - 13% earned below the Federal Poverty Level (FPL)
  - 33% were ALICE, in households that earned above the FPL but not enough to afford the basics in the communities where they live
  - Together, 46% of households in Florida were below the ALICE Threshold (poverty + ALICE divided by total households)



# PROPOSED POLICY PLATFORM

## Expand a Child Tax Credit that prioritizes cutting child poverty and ending hunger

- ❖ Allow the credit to be received in monthly payments, which have a greater impact than annual payments on reducing food insecurity.



# FOOD INSECURITY ON COLLEGE CAMPUSES

- ❖ 40% of college students in Florida are food insecure
- ❖ Some college students may qualify for Supplemental Nutritional Assistance Program benefits—but they must meet other eligibility criteria specifically for college students, such as working while in school or being a single parent
- ❖ A GAO report recently found that about 59% of food insecure students who were potentially eligible for SNAP didn't report receiving benefits



# PROPOSED POLICY PLATFORM

## Address the SNAP GAP

- ❖ Pass legislation that helps close the college “SNAP gap,” such as The Opportunity to Address College Hunger Act or Closing the College Hunger Gap Act
- ❖ Persuade the Department of Education to inform low-income students matriculating on college or university campuses of their potential eligibility for SNAP, WIC, and other benefits
- ❖ Partner with a research institute to study best practices for closing the SNAP gap on college campuses. Learn which interventions have the potential to be brought to scale and to attract public funding through future advocacy

The image displays three informational panels from the USDA regarding SNAP for college students. The first panel on the left features the USDA logo and states: "SNAP helps college students focus more on their studies and less on where their next meal will come from." It includes statistics: "3.3 million college students were potentially eligible for SNAP in 2020" and "67% of those college students reported not receiving benefits." An image of a grocery bag is shown. The middle panel has a checkmark icon and asks "Think you might qualify?" It lists eligibility criteria: "All college students must meet the SNAP eligibility criteria to receive food assistance. If you're enrolled half time or more, you must also meet at least ONE of the following conditions:" followed by a bulleted list: "Work 20+ hours per week", "Participate in a federal or state work-study program", "Have a physical or mental disability or condition that prevents you from working", "Care for a young dependent child", "Receive Temporary Assistance for Needy Families (TANF)", "Enrolled in college through certain employment & training programs, such as SNAP E&T, Workforce and Innovation and Opportunity Act (WIOA), and others", "Participate in an on-the-job training program", and "Be under age 18 or over 49". The third panel on the right shows a laptop displaying a website and asks "Need more info?" with the contact information: "Contact your state or local SNAP office: fns.usda.gov/snap/state-directory".



# THANK YOU

Florence French Fagan - [ffrench@bread.org](mailto:ffrench@bread.org) - (561) 223-5944



**BREAD**  
FOR THE WORLD

**NOURISH**  
our *FUTURE*

*REGISTER FOR THE*  
*2/4/25 LAUNCH*

To register, scan the code with  
your smartphone,  
or click [here](#).



**Our goal is 1,000+ participants!**





# 2024 Economic Mobility Summit

United Way of Palm Beach County  
Hunger Relief Initiative



# History

Food insecurity identified as a community issue

- Partnered with:
  - Food Research and Action Center (FRAC) in Washington, D.C.
  - University of South Carolina Arnold School of Public Health
- Engaged 180 community organizations
- Conducted numerous personal interviews with:
  - Key stakeholders
  - Service recipients
  - Providers
- Result:
  - Hunger Relief Plan Palm Beach County (2015)



SECURING  
FUTURE  
ECONOMIC  
STABILITY SUMMIT  
pathways for upward mobility



# Funding Partners



Mackenzie  
Scott

Anonymous Private  
Foundation

Dalton Family  
Foundation

Lowe II  
Foundation

Anonymous  
Donor



# Hunger Relief Community Partners

- 12th Street Ministries Church of God of Prophecy (COGOP)
  - 211 Palm Beach/Treasure Coast
    - Alpert Jewish Family Service
    - American Heart Association
- Area Agency on Aging Palm Beach/Treasure Coast
  - Arms of Hope
  - Bank of America
  - Bezos Academy
  - Blessed Provisions
  - Blessings in a Backpack
    - Boca Helping Hands
  - Boynton Beach Faith Based CDC
- Breastfeeding Coalition of Palm Beach County
  - Caridad Center
- Catholic Charities of the Diocese of Palm Beach, Inc.
- Center for Independent Living Options (CILO)
- Children's Services Council of Palm Beach County
  - Citi Private Bank
  - City of Belle Glade
  - City of Pahokee
  - City of South Bay
  - Club 100 Charities
- Community Foundation for Palm Beach & Martin Counties
  - Community of Hope Church South Florida, Inc.
    - CROS Ministries
- Early Learning Coalition of Palm Beach County
  - Easterseals
    - Eben-Ezer French SDA Church
- Echoes of Praise Ministries International, Inc.
- Economic Council of Palm Beach County
  - El Sol

# Hunger Relief Community Partners

- E-RoadMap Corporation
- Faith Deliverance Feeding Hope Village
  - Family Central
  - Farm Share
- Farmworker Coordinating Council of Palm Beach County
  - Federation of Families of Florida
    - Feed the Hungry
    - Feeding Dreams
    - Feeding South Florida
    - First Corinthian
- First Haitian Baptist Church of Belle Glade
  - First SDA Church of Riviera Beach
    - FLIPANY
  - Florida Crystals Corporation
- Florida Department of Agriculture and Consumer Services (FDACS)
- Florida Department of Children and Families (DCF)
- Florida Department of Health (DOH) - Palm Beach County
- Florida Impact to End Hunger
  - Florida Policy Institute
- Florida Power & Light Company (FPL)
- GHL Community Services (fka Uruguayos Hoy Community Services)
  - Good Shepherd's Food Pantry
- Greater Union Missionary Baptist Church
  - Greenway Strategy Group
  - Hands Together for Haitians
- Health Care District of Palm Beach County
- Health Council of Southeast Florida
  - Healthier Glades
- Healthy Mothers, Healthy Babies Coalition of Palm Beach County
  - Heart Health & Healing (Triple H) Ministries
- Holy Redeemer Episcopal Church
  - HomeSafe
  - Hospitality Helping Hands
- Jewish Federation of Palm Beach County

# Hunger Relief Community Partners

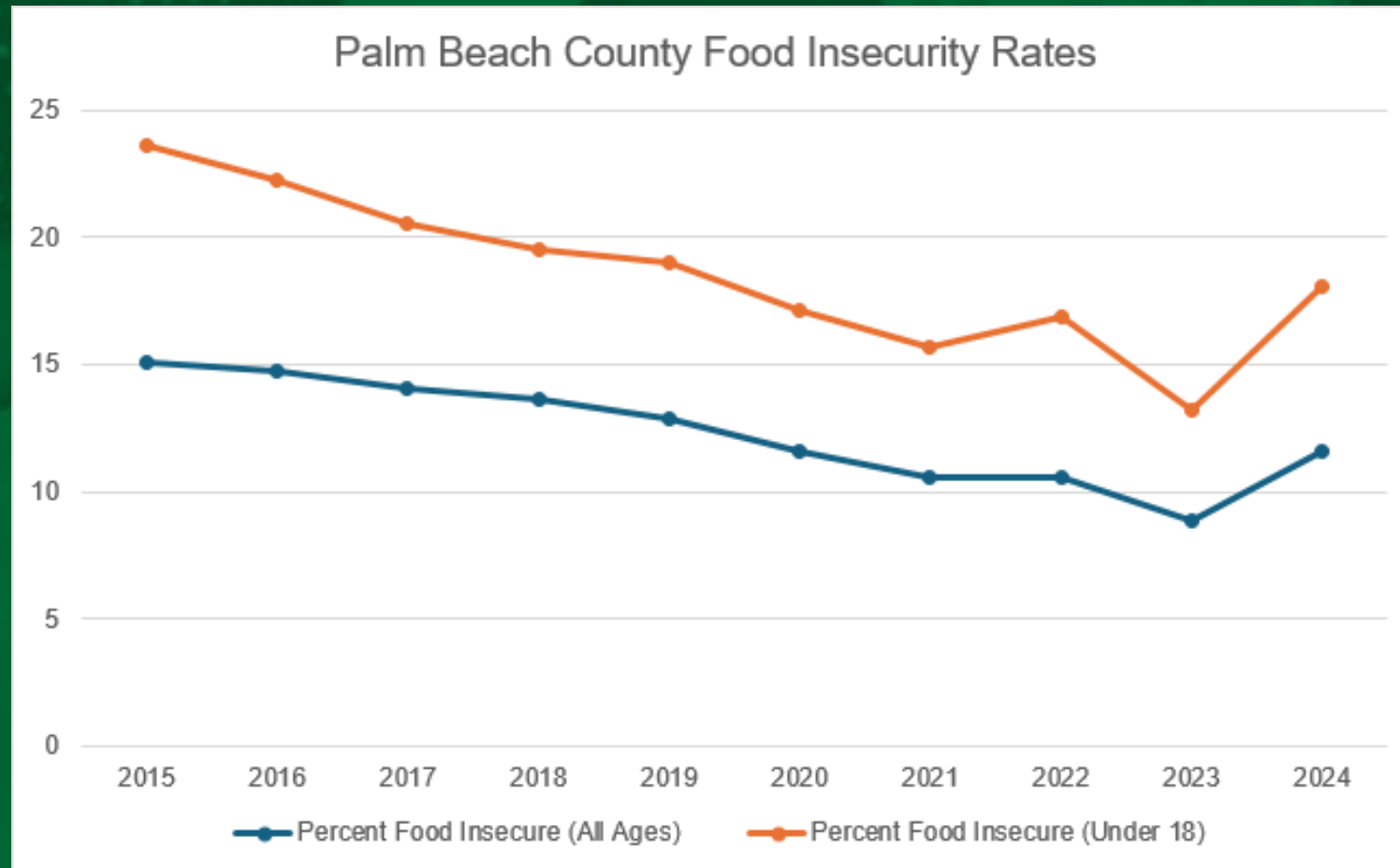
- KTM Youth & Community Network, Inc.
  - La Leche League
  - Liberty Movement Ministry
    - Living Hungry, Inc.
    - Lost Tree Foundation
  - Loving Hands for the Needy
  - Marine Education Initiative
- Meals on Wheels of the Palm Beaches
  - More Than Conquerors Ministries
    - MorseLife
  - Mount Calvary Baptist Church
  - Nelson's Outreach Ministries
    - Northend RISE
- Office of Congresswoman Lois Frankel
- Operation Kingdom International Church
  - Palm Beach Atlantic University
  - Palm Beach County Board of County Commissioners
- Palm Beach County Community Services Department
- Palm Beach County Division of Senior and Veteran Services
  - Palm Beach County Food Bank
  - Palm Beach County League of Cities
  - Palm Beach County Legislative Department
  - Palm Beach County Library System
- Palm Beach County Office of Community Revitalization
  - Palm Beach County Youth Services Department
    - Palm Beach Harvest
    - Palm Beach State College
    - Palm Health Foundation
  - Pathways to Prosperity, Inc.
    - Project LIFT
    - Publix
    - Quantum Foundation
  - Restoration Bridge International
- Ruth & Norman Rales Jewish Family Services, Inc.



# Hunger Relief Community Partners

- Salem Haitian Evangelical Lutheran Church
  - School District of Palm Beach County
    - St. Gregory's Episcopal Church
      - St. Paul's COG in Christ
- St. Paul of the Cross Catholic Church
- St. Philip Benizi Catholic Church
- The Arc of Palm Beach County
  - The Arc of the Glades
  - The Glades Initiative, Inc.
- The Guatemalan-Maya Center
  - The Lord's Place
- The Pearl Mae Foundation
  - The Soup Kitchen
  - The Volen Center
  - TKM Bengard Farms
- Town of Palm Beach United Way
  - Tree of Life Resource Center
- University of Florida, Institute of Food and Agricultural Sciences (UF/IFAS)
  - United Farmers Alliance

# Community Needs



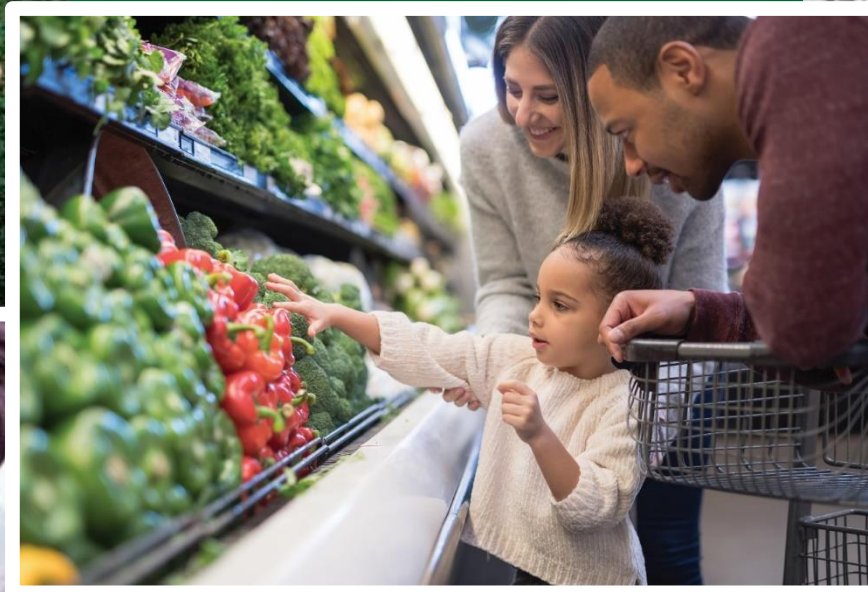
- More than 173,000 residents in Palm Beach County struggle with hunger, 50,890 of which are children
  - Feeding America, *Map the Meal Gap*
- Approximately 75% of the families with children enrolled in the Palm Beach County School District are considered economically disadvantaged as of May 2024.
- 46% of our county households are struggling to make ends meet according to the most recent ALICE report.

# Hunger Relief Work Groups

Children



Outreach & Advocacy



Infrastructure



Seniors



The Glades

**SECURING  
OUR FUTURE**  
ECONOMIC  
MOBILITY SUMMIT  
Building pathways for upward mobility



# Reducing Food Insecurity

## 2015–2024

- Afterschool Meals +437%
- Summer BreakSpot +7%
- WIC (Women, Infants & Children) +25%
- SNAP (Food Stamps) -18%

# Reducing Food Insecurity

## Weekend Backpack Program (2014 – 2024)

- Number of sites +132%
- Number of children served +176%

## Seniors Home Delivered Meals (2017 – 2024)

- Participation +18%
- Number of meals served +45%
- Seniors congregate meals + 3%

# United Way of Palm Beach County

## Food Finder Map

For Individuals For Companies For Nonprofits Contact


**United Way** United Way of Palm Beach County

[GET HELP](#) [OUR IMPACT](#) [GET INVOLVED](#) [NEWS & EVENTS](#) [ABOUT US](#) [DONATE](#)

### Palm Beach County Food Finder

This map was made with Google My Maps. Create your own.

- The Palm Beach County Food Finder map was created by United Way of Palm Beach 277,744 views Published 11 days ago
- Soup Kitchen - Hot Meal
  - All items
- 18 and Under Meals
  - All items
- Drive-Thru Style Groceries
  - All items



Map showing locations of food resources in Palm Beach County, including Soup Kitchen - Hot Meal, 18 and Under Meals, and Drive-Thru Style Groceries. Locations are marked with orange and blue icons. A QR code is visible on the right side of the map.

SECURING OUR FUTURE ECONOMIC MOBILITY SUMMIT  
Building pathways for upward mobility

# Palm Beach County Food Bank Expansion



**SECURING  
OUR FUTURE**  
ECONOMIC  
MOBILITY SUMMIT  
Building pathways for upward mobility



# Thank You

**Julie Kreadle**

Hunger Relief Consultant  
United Way of Palm Beach County  
Email: [julie@unitedwaypbc.org](mailto:julie@unitedwaypbc.org)



[UnitedWayPBC.org/Hunger](https://UnitedWayPBC.org/Hunger)







# 2024 Economic Mobility Summit



MISSION:  
Together, we  
nourish our  
neighbors and  
improve their  
lives one meal at  
a time.



# Hunger in Palm Beach County

## What is Food Insecurity?

- Food insecurity describes a household's inability to provide enough food for every person to live an active and healthy life.
- One "bad month" can be enough to plunge a household into food insecurity.
- Lay-offs at work, unexpected car maintenance or an accident on the job can suddenly force a family to choose between buying food and paying bills.
- Working families across America face countless situations that can result in food insecurity and hunger.

# Hunger in Palm Beach County



- Over 173,000 Palm Beach County residents don't know where they will get their next meal
- Many are working families
- Two-thirds of them are our most vulnerable neighbors
  - More than 51,000 are children

# Food Bank Programs

- Partner Marketplace
- SNAP Outreach
- Senior Hunger Initiatives
- Community Kitchen
- Childhood Hunger Initiatives
- Nutrition Education

# Thank You

**Jamie Kendall**

Executive Director

Palm Beach County Food Bank

Email: [Jamie @pbcfoodbank.org](mailto:Jamie@pbcfoodbank.org)

